

Evolve with the times

EVOLUTION SC is a small character ink jet printer designed to print a lot number, expiration date or other product identification directly onto the primary product as it travels on the production line. Designed to be a complete system which eliminates the need for ancillary add-ons, it is the lowest cost small character ink jet printer available.

Inkjet Technology by Hewlett Packard

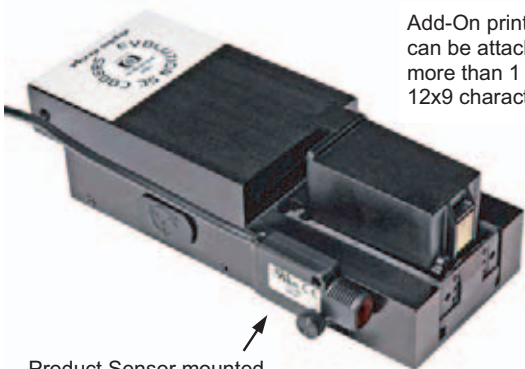
The most critical component of any ink jet printer is the ink supply and delivery system. EVOLUTION SC is powered by inkjet technology by Hewlett Packard. HP's thermal inkjet cartridge delivers the highest reliability and print quality from the first printed message to the last.



Printhead cartridges

A Complete System

EVOLUTION SC is supplied as a complete system that's ready to install right out of the box. The system includes the controller, mounting bracketry, printhead module and product sensor. The controller features a backlit WYSIWYG display and a tactile style keypad for message entry. The controller can also operate both the EVOLUTION I and EVOLUTION II High Resolution ink jet printers. Complete control of an EVOLUTION network can be accomplished with the handheld controller or a remote PC via an RS485 data link. Universal mounting bracketry has horizontal and vertical adjustment, and easily mounts to the production line with two mounting bolts. The printhead module contains the operating electronics for the ink cartridge that snaps securely in place and is easily removable for quick changeover.



Product Sensor mounted on either side.

Add-On printhead modules can be attached to provide more than 1 line of 7x5 or 12x9 characters.

Printhead module with ink cartridge installed.

EVOLUTION

Small Character Inkjet Printer



The complete system

Variable Character Heights

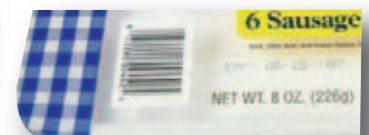
EVOLUTION SC offers 3 distinct character heights to choose from which are selectable through the keypad. Bold characters are also selectable for the two larger font sizes.

| SIZE | DOT MATRIX PATTERN |
|----------------|--------------------|
| .052" (1.32mm) | 5 x 5 |
| .073" (1.85mm) | 7 x 5 |
| .073" (1.85mm) | 7 x 5 BOLD |
| .125" (3.2mm) | 12 x 9 |
| .125" (3.2mm) | 12 x 9 BOLD |

The printhead is capable of printing a single line of text in the 7x5 and 12x9 font sizes, while two lines can be printed in the 5x5 font.

Ink Supply

The printhead contains a volume of 17cc of ink. The Non-Porous ink formulation was designed to give excellent adhesion and dry time on a variety of substrates including poly styrene, PVC, HDPE, coated chipboard, and stretch and shrink overwraps. A porous ink formulation is also available.



Actual printed samples with .125" character height.

Technical Specifications

Standard Features

Alpha/Numeric character set plus special characters
Character Heights: .052" (1.32mm), .073 (1.85mm) .125" (3.2mm)
96 character message length
Message storage: 100 messages
Programmable print delay, line speed and print direction
Sequential numbering up to 9 digits
Production counting
Variable time and date formats
Inverted printing
Inter-character spacing
Shift coding
Auto repeat
Expiry Date offset
English, Spanish language prompts
Password Protection



Controller

Environmental

50°F – 104°F (10°C – 40°C)
Up to 80% RH non-condensing

Production Speed

Up to 200 FPM (61 m/min) at 96dpi

Power Required

110 – 240 VAC, 50 – 60 Hz, 0.5A

Ink Supply

Built into the printhead and will enable the system to print the following approximate number of characters depending on font size.

DOT MATRIX CHARACTERS MESSAGES/CARTRIDGE*

5 x 5 8,000,000 800,000
7 x 5 5,650,000 565,000
7 x 5 Bold 2,668,000 266,800
12 x 9 3,694,000 369,400
12 x 9 Bold 1,921,000 192,100

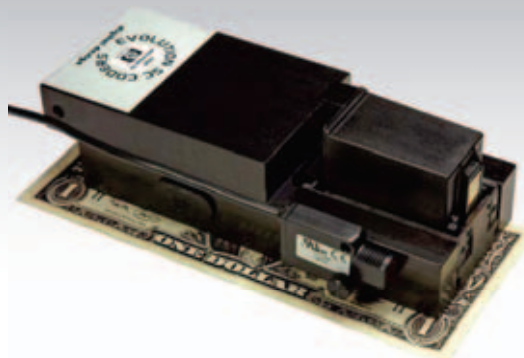
* Based on a typical 10 digit message.

Ink Change Time

DOT MATRIX Change Time in Days

5 x 5 20.5 days
7 x 5 14.5 days
7 x 5 Bold 6.8 days
12 x 9 9.5 days
12 x 9 Bold 4.9 days

Above Ink Change Times represents the number of days an ink cartridge will last when running a 10 character message at a production rate of 100 products per minute, one shift per day.



Printhead module shown with a U.S. One Dollar Bill for size comparison.



Dimensional Data

Controller: 4.125" wide x 8.75" long x 1.500" deep
Printhead Module: 2.1" wide x 5.6" long x 1.475" deep

Software Options

EVOLUTION-NET software for PC control of entire network of EVOLUTION printers

Hardware Options

Add-on printhead modules
Top coding bracketry
Floor stand
Product sensor bracket
External encoder



Printhead module



Trend Marking Systems

PO Box 1311 Castle Hill NSW 2154
TEL: 02 96299535 FAX 02 96297535
EMAIL: trend@trendmarking.com.au
www.trendmarking.com.au