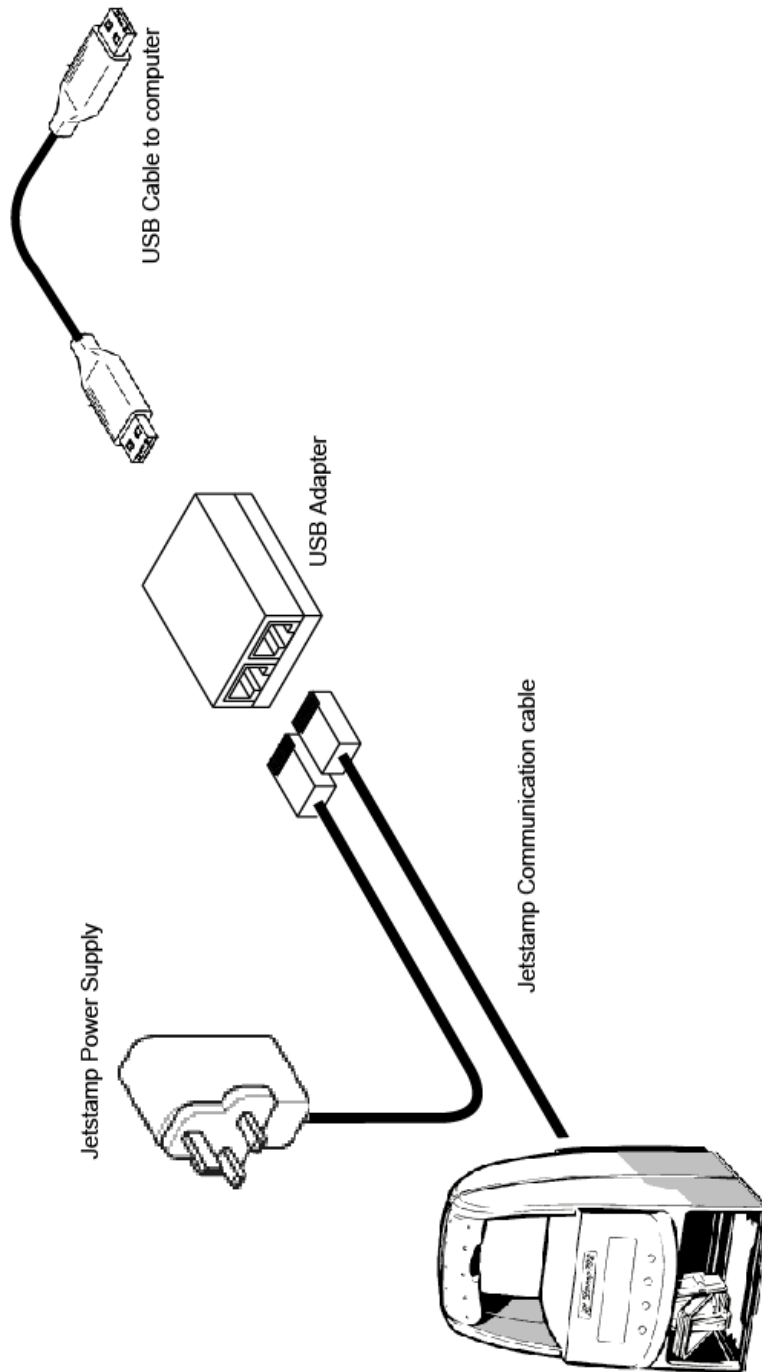




## Physical Connections:





## Placing stamp in transfer mode

>Press the 'MODE' button.

```
P:26 R:01/01
15:00 03.06.2009
ERNST REINER 00
-----
CLOCK | MO/TEXT | NEXT | MODE
```

**X**

>Press the 'SETUP' button.

```
P:26 R:01/01
15:00 03.06.2009
ERNST REINER 00
-----
SETUP |          | CLEAN | MODE
```

**X**

>Press the 'NEXT' button.

```
SETUP - MODULE
SETTINGS
-----
RETURN | NEXT | CALL |
```

**X**

>Press the 'CALL' button.

```
SETUP - MODULE
UPDATE
-----
RETURN | NEXT | CALL |
```

**X**

>Press the 'NEXT' button 2 times.

```
SM - UPDATE
FIRMWARE ALL
-----
RETURN | NEXT | START |
```

**X**

>Press the 'START' button.

```
SM - UPDATE
STAMP PICTURE
-----
RETURN | NEXT | START |
```

**X**

>Ready to start transfer.

```
SM - UPDATE
STAMP PICTURE ACTIVE
-----
RETURN |      |      |
```

>Transfer successful.

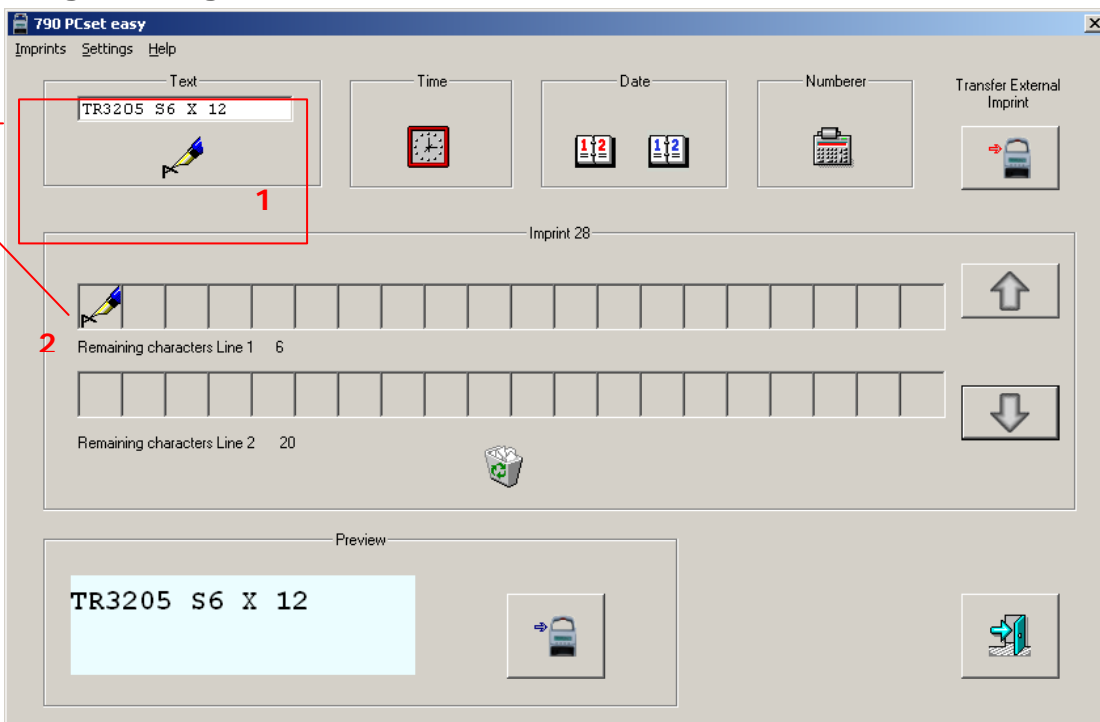
```
SM - UPDATE
STAMP PICTURE OK
-----
RETURN |      |      |
```

>Transfer failed.

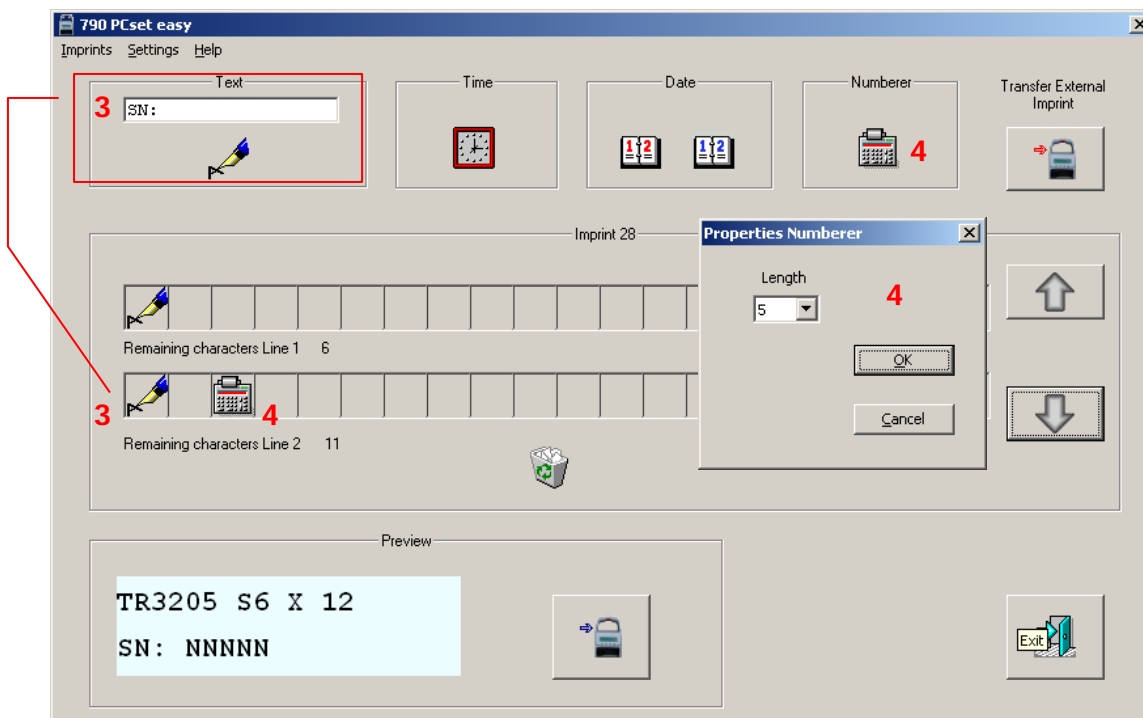
```
SM - UPDATE
STAMP PICTURE DEFECT
-----
RETURN |      |      |
```



## Loading message

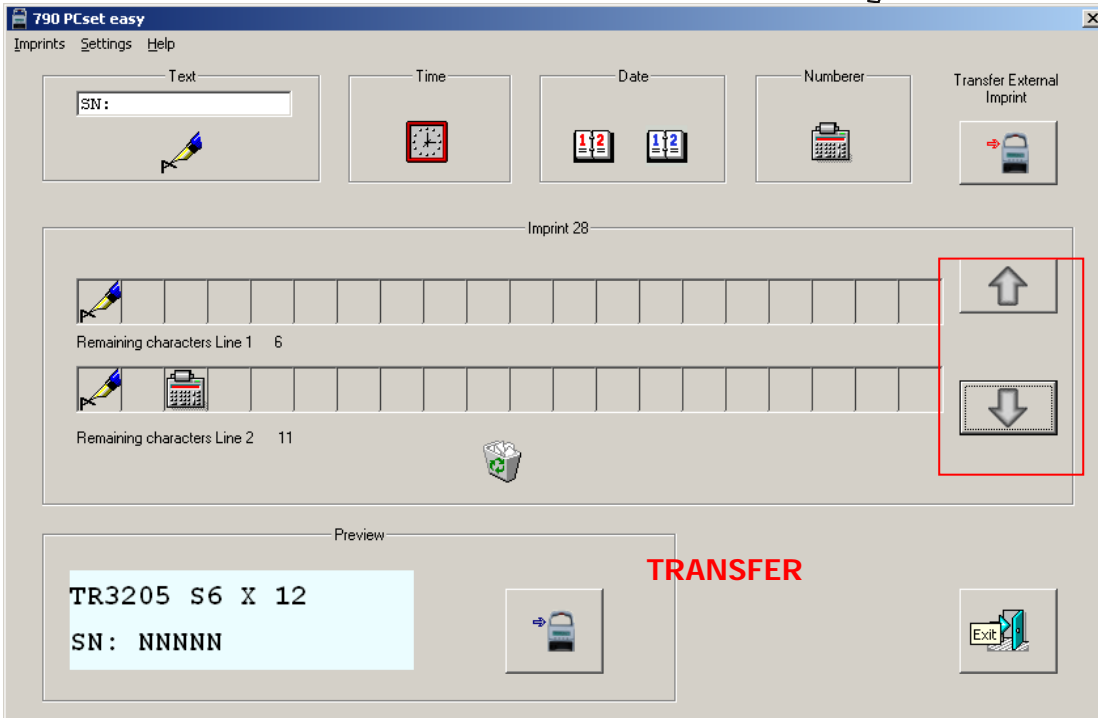


1. Type your text in the text area provided, eg; "TR3205 S6 X 12"
2. Drag the pen icon underneath the text area to an available box



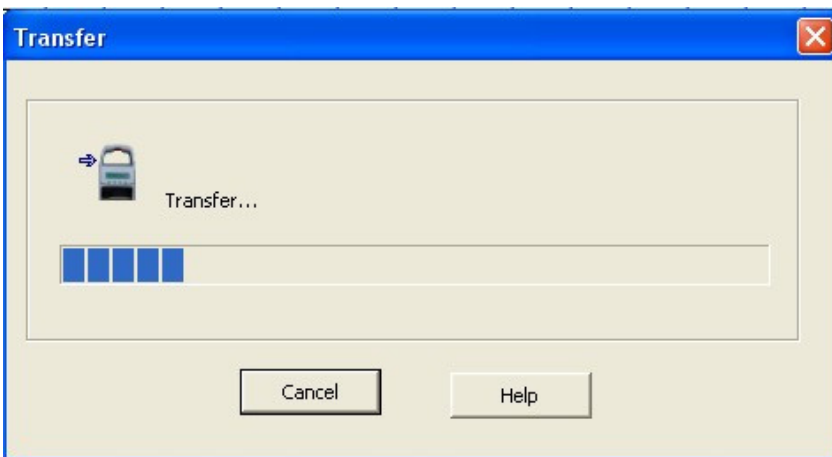
\* Note that the preview will update to reflect the message entered

3. Re-type the text "SN:" in the edit box and drag the icon to the bottom line
4. Double-click the "Numberer" icon and choose the number of digits in your serial number. Now drag the icon to a spare box.



Note: The “Up Down” arrows allow you to program 4x different messages. These will be messages #26 – 29 on the JetStamp.

After clicking “Transfer” the following progress bar should appear.



Note: You cannot click “Transfer’ twice in succession. The JetStamp must be placed in “transfer mode” should you need to change the existing messages again.